

# PhoenixCard

Manual Document/4.0.0

## Document history

[illegible]

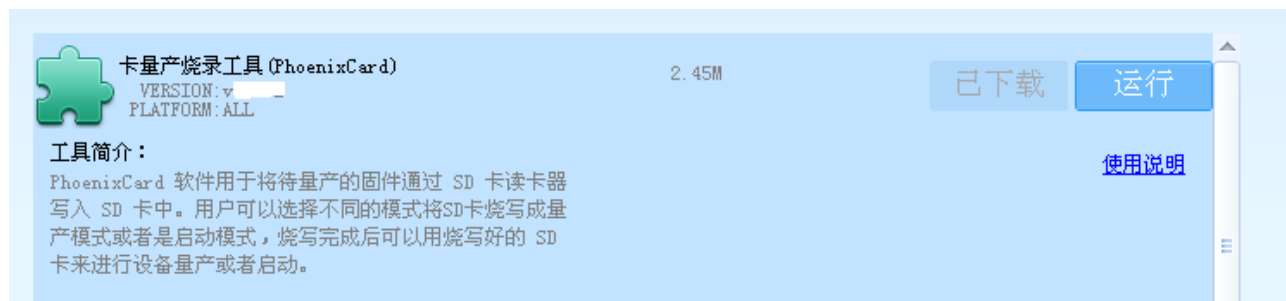
# Contents

PhoenixCard.....	1
Manual Document/4.0.0 .....	1
<b>Contents</b> .....	2
1. Start up .....	3
2. Software description .....	4
2.1. Profile .....	4
2.2. Software UI.....	4
3. Operation of burning card.....	7
4. Restore the card .....	10

# 1. Start up

There are two ways to start the software

## A. Start from APST



## B. Start In Foulder

Execute the application PhoenixCard.exe

luaBase.dll	136 KB	应用程序扩展	2012-9-15 11:03
luasocket.dll	24 KB	应用程序扩展	2012-9-18 18:44
ParserManager.dll	81 KB	应用程序扩展	2015-12-1 11:22
PhoenixCard.exe	1,742 KB	应用程序	2015-12-1 17:03
PhoenixCard.lan	2 KB	LAN 文件	2015-11-30 16:35
PhoenixCard.pdb	14,091 KB	Program Debug D...	2015-12-1 17:03
PhoenixCard.lua	222 KB	应用程序扩展	2015-12-1 16:35

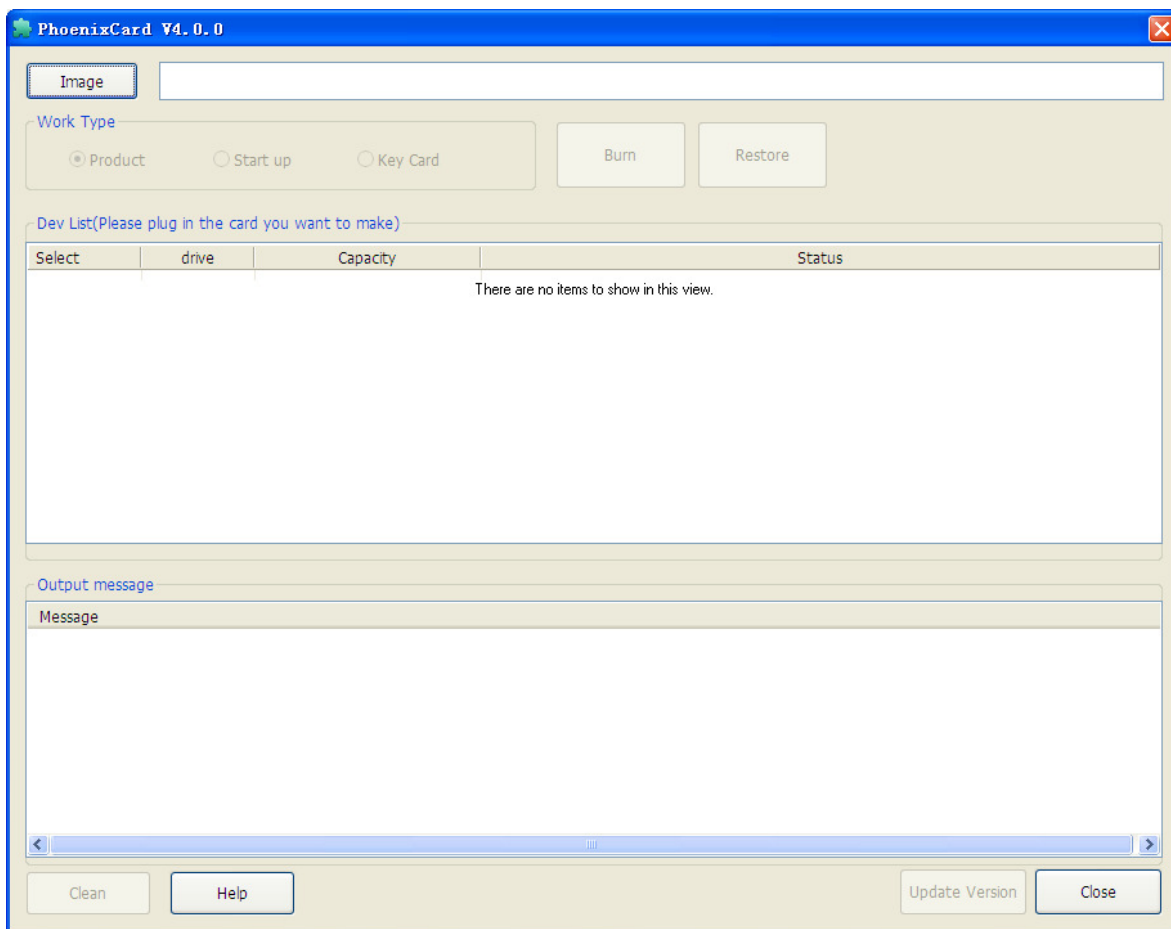
## 2. Software description

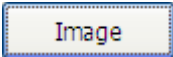
### 2.1. Profile

The PhoenixCard software is used to write the SD card reader into the SD card. Users can choose different patterns of SD card will burn written production mode or is startup mode, programming is completed can use burn written SD card of production equipment or start

### 2.2. Software UI

PhoenixCard UI as below

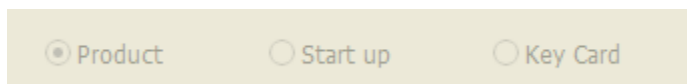


1) . 

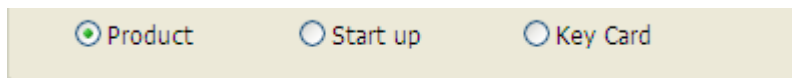
Mouse click the button to pop up the IMG file selection dialog box, users can choose to burn the need to burn the firmware file °

2) . 

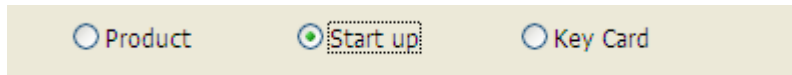
Here are three types of production cards (Product, Start up, Key Card)



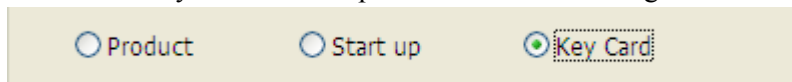
Select the card production burn for mass production of the SD card ;



Select "card start" burn for the start of the SD card °



Select the "Key Card" for the production of the burning serial number tool for the SD card

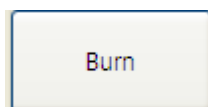


### 3) Equipment list

Dev List(Please plug in the card you want to make)			
Select	drive	Capacity	Status
<input checked="" type="checkbox"/> 1	L	15278M	
<input checked="" type="checkbox"/> 2	M	7496M	
<input checked="" type="checkbox"/> 3	P	15278M	

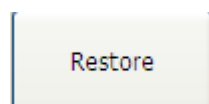
The equipment list will automatically insert TF card mobile storage equipment, all the enumeration to the list, for the user to choose writing. Users only need to write the corresponding letter on the card you can check. (suggest not to burn the card or U disk please pull out)

**Note: this software can also write to multiple TF Card**



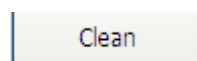
5).

Mouse click the button to start the card's burning, burning process do not do other operations. ( Please backup the important data on the card before operation )



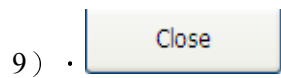
6) .

Mouse click the button to restore the card format for ordinary card °



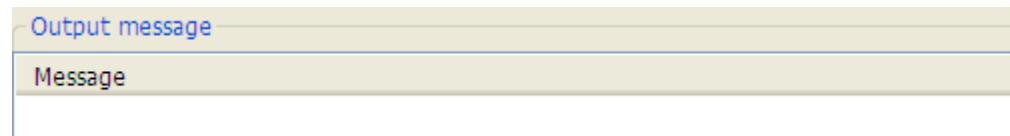
7) .

The mouse click the button to remove the information from the list °



Click the mouse button to exit the software

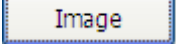
10) · Prompt information list



Tips information during the burn card °

### 3. Operation of burning card

Step 1 , Lunch The phoenixcard executable file.

Step2, Click button  to select the image file.

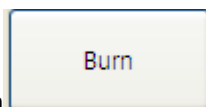
Step3, Plug in the SD or TF Card with the Card adapter.

Step4, Select the drive you want to burn.

Dev List(Please plug in the card you want to make)			
Select	drive	Capacity	Status
<input checked="" type="checkbox"/> 1	L	15278M	
<input checked="" type="checkbox"/> 2	M	7496M	
<input checked="" type="checkbox"/> 3	P	15278M	

Step5, Select the work type

☒ Product
 ☐ Start up
 ☐ Key Card

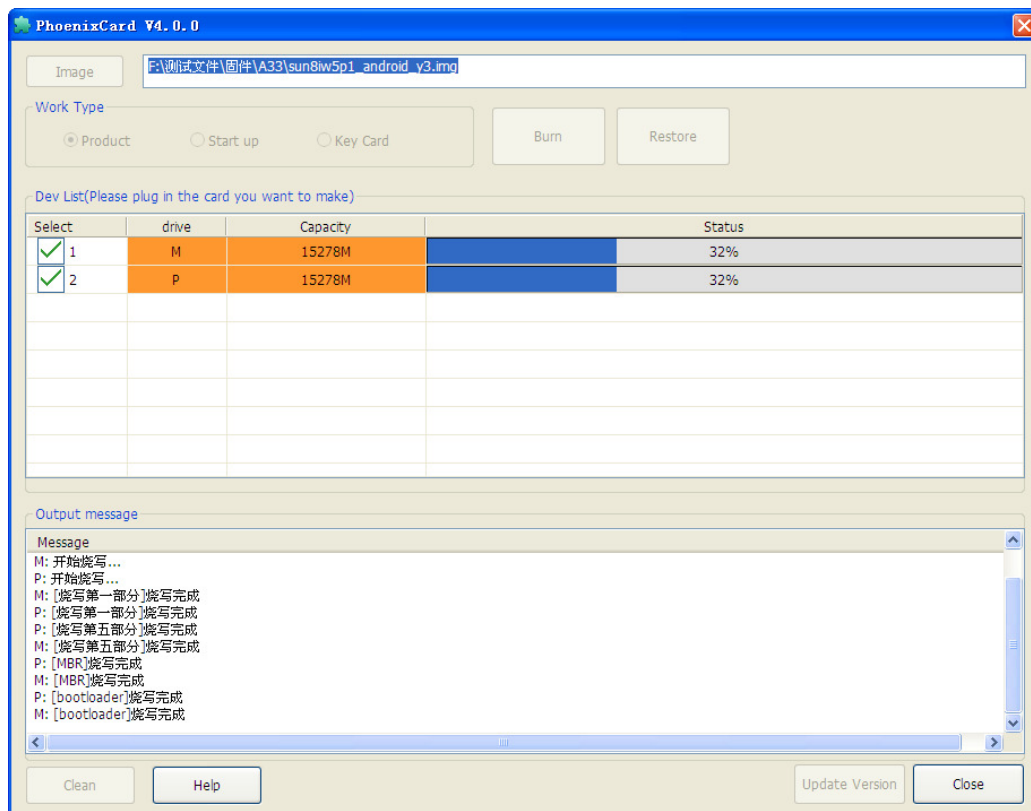


Step6. Click the button

Burning tips information will be displayed in the middle of the prompt message list

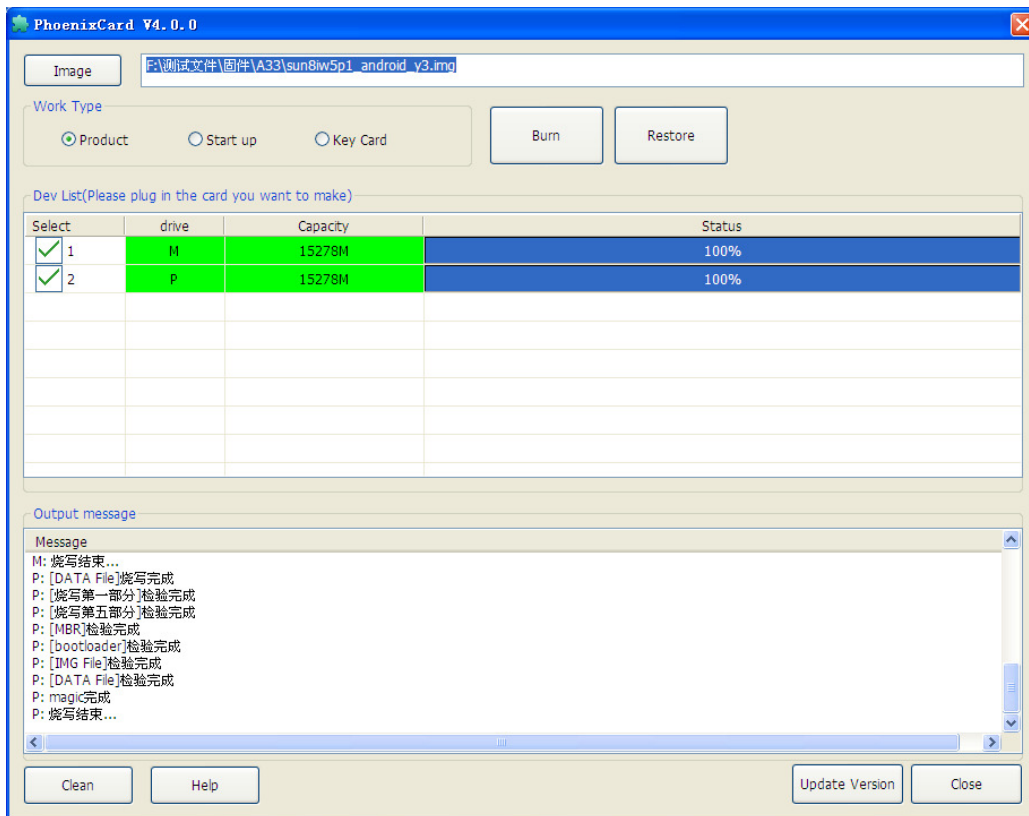
The result Screenshot as below

A. Interface in the process of burning

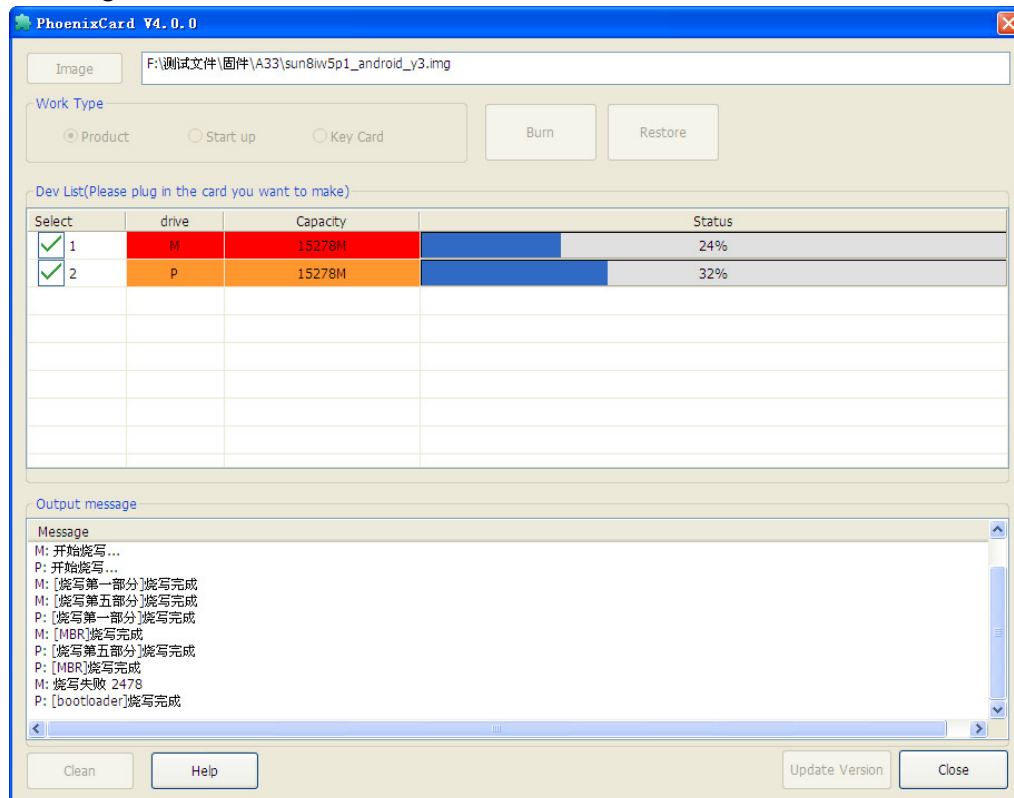




## B. Burn successful interface



## C. Burning failure interface

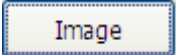


Failed to show a red prompt, as shown in figure M card tips.



## 4. Restore the card

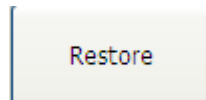
Step 1 , Lunch The phoenixcard executable file.

Step2, Click button  to select the image file.

Step3, Plug in the SD or TF Card with the Card adapter.

Step4, Select the drive you want to burn.

Dev List(Please plug in the card you want to make)			
Select	drive	Capacity	Status
<input checked="" type="checkbox"/> 1	L	15278M	
<input checked="" type="checkbox"/> 2	M	7496M	
<input checked="" type="checkbox"/> 3	P	15278M	

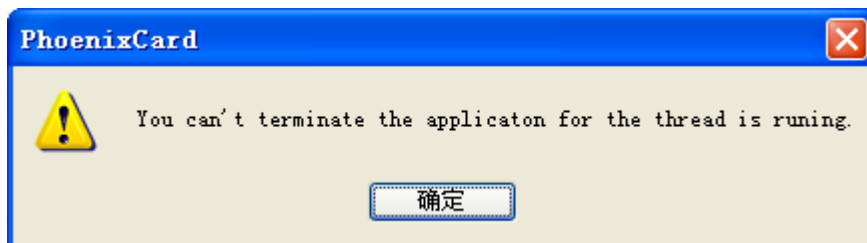


Step4, Click the button to restore the card

Step5, Plugin out the card

### Note:

A. Before the operation of production card is completed, click on the closure will prompt



B. In the process of burying, the operation of the plug card will directly cause the failure of burning